

## 185 North Street Wireless

As a 185 North Street resident, you can use the following information to gain access to the College's wireless network. Please do not share this security information with anyone that does not have an affiliation to the College. If you have any difficulties setting up your wireless connection, contact the Help Desk at 978-665-4500.

### For Mac users:

**If the computer has previously been on Wireless**, there will be a Wireless icon at the top right of the Apple Menu Bar (looks like cone of curved lines)

- Click once on the Wireless icon and select **Other...**
- Under Network Name: type **FSC-185NORTH**
- Under Wireless Security: select **WEP 40/128-bit hex**
- Under Password: **(For password call the Help Desk at 978-665-4500)**
- Click OK

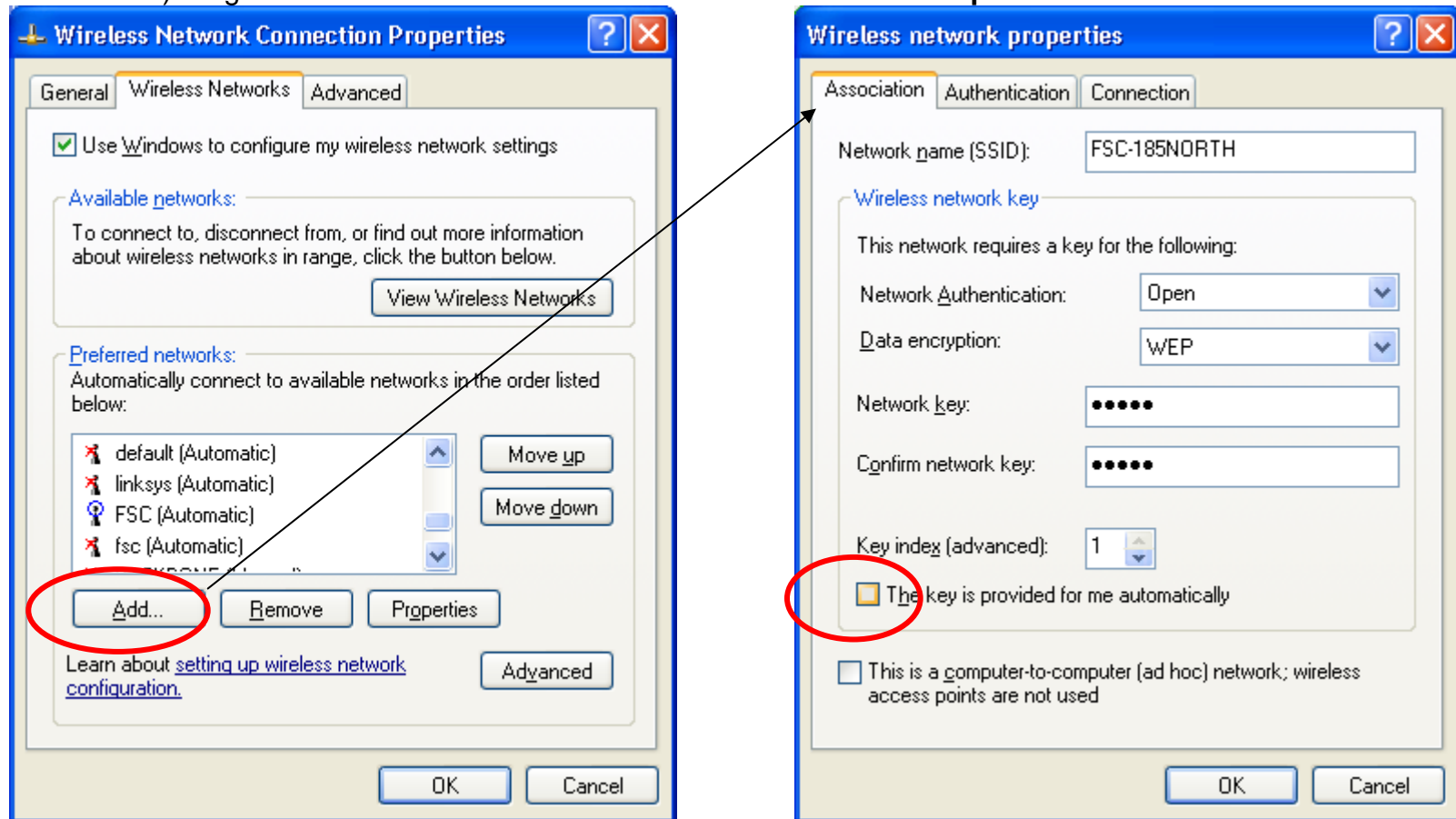
**If the Mac has never been on Wireless** - Click once on **System Preferences** on the Dock (Light Switch icon)

- Locate **Internet & Network** group (third one down in the list)
- Click once on **Network**
- On the **Location**: dropdown menu, select **Automatic**
- On the **Show**: dropdown menu, select **Airport**
- Under the **Airport** menu, select **By default, join**: Preferred networks
- In the window, under Network Name, a list of available Wireless Networks will appear
- Click the check box next to **Show Airport status in the menu bar**
- Click **Apply Now**

Do the first group of steps above.

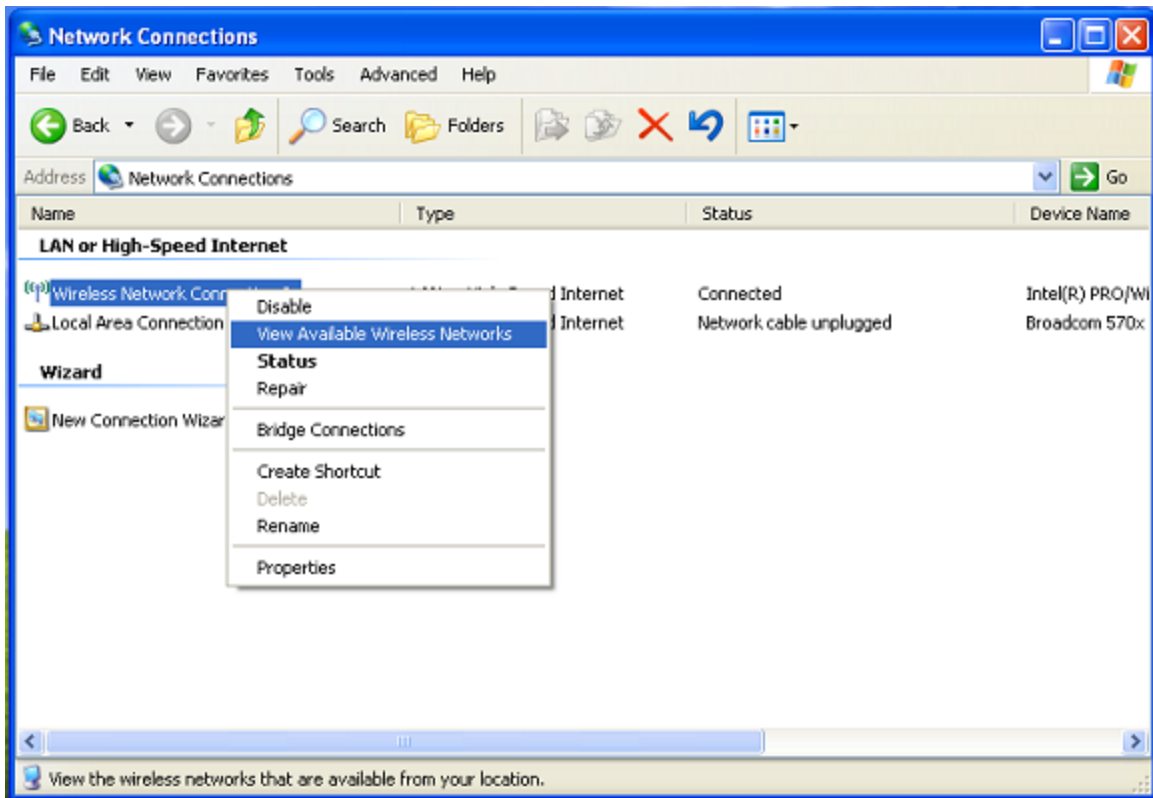
## For Windows XP users:

Right Click on the Desktop Icon for **My Network Places**, choose **Properties** (or go to Start> Settings> Control Panels and Double-Click **Network Connections**). Right-Click **Wireless Network Connection** and choose **Properties**.



- Select the **Wireless Networks** Tab, Under Preferred Networks click **Add**.
- In the Wireless network properties, **Association** Tab, under **Network name(SSID)**: Type **FSC-185NORTH**
- **Network Authentication = Open**
- **Data encryption = WEP**
- Uncheck **The key is provided for me automatically**
- Network key: = **(For network key call the Help Desk at 978-665-4500)**
- Confirm network key: = **(For network key call the Help Desk at 978-665-4500)**

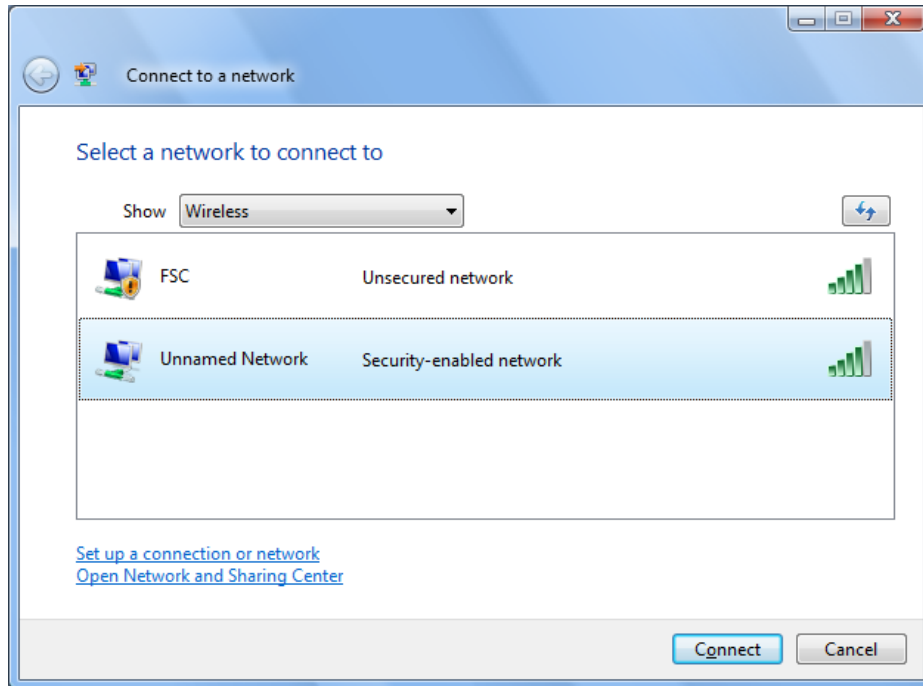
Click **OK** and **OK**



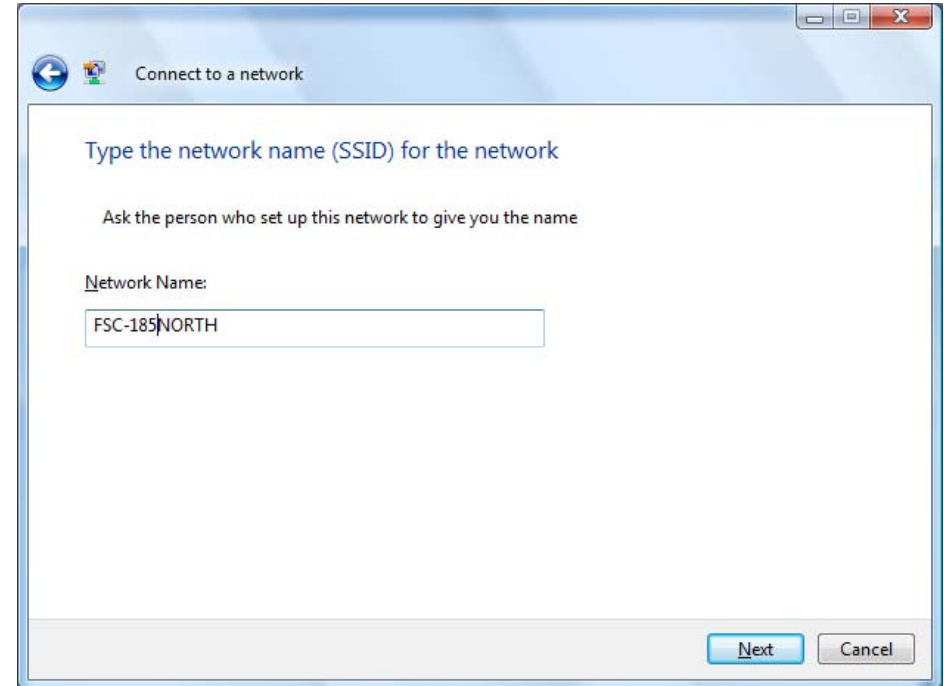
In the **Network Connections** window, right-click **Wireless Network Connections**.  
Click **View Available Wireless Networks**.  
Select **FSC-185NORTH**.  
Click **Connect**.

## For Windows VISTA users:

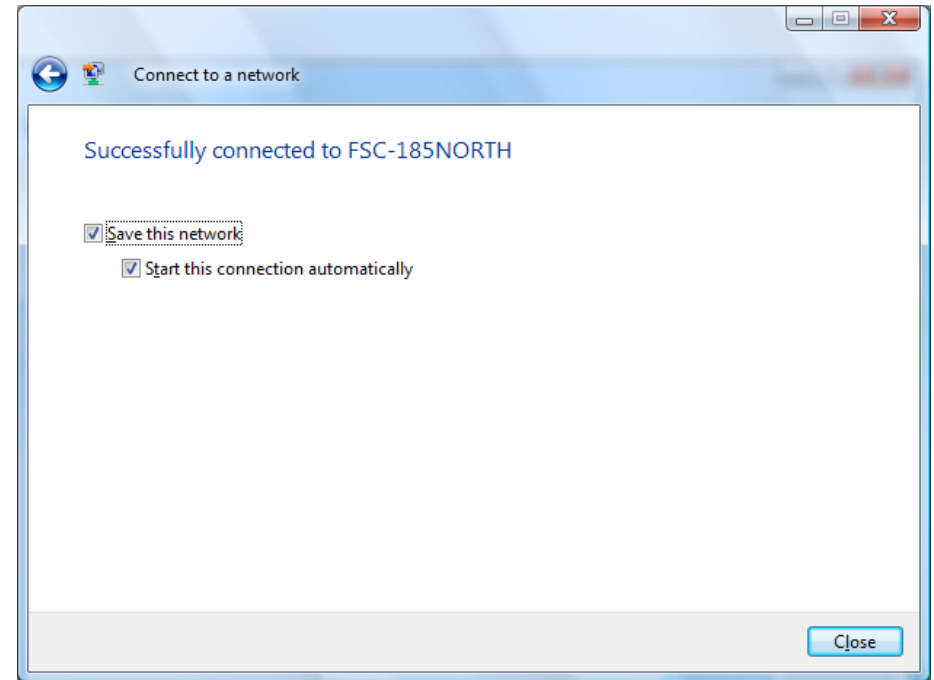
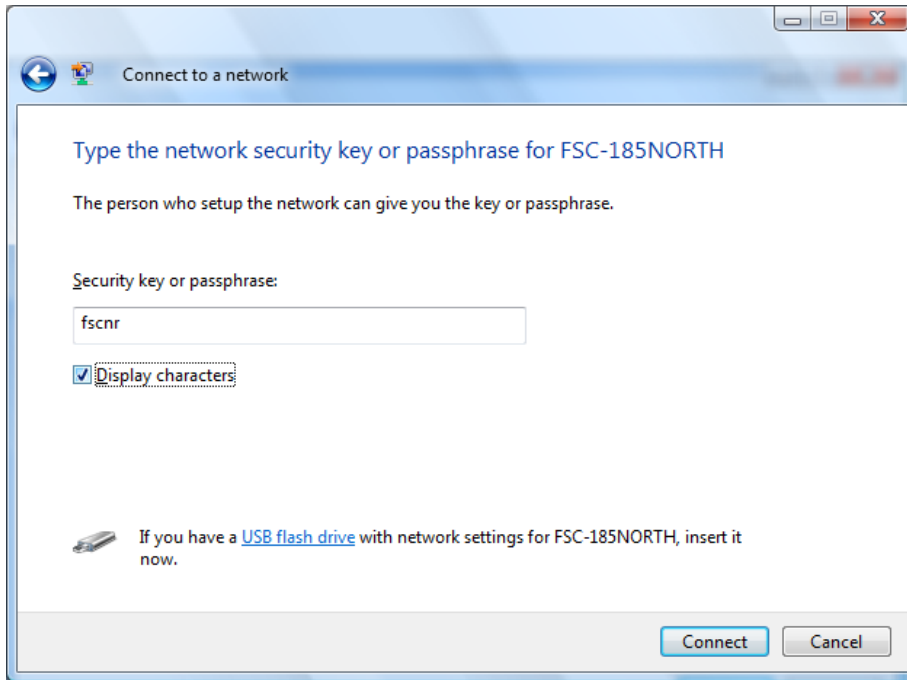
Click the Windows **Start** button (lower left on the Task Bar)  
Select **Connect To** (A list of potential Wireless Connections will appear)



Show = **Wireless**  
Select **Unnamed Network**, click **Connect**



Network Name = **FSC-185NORTH**. Click **Next**



Security key or passphrase: = **(For passphrase call the Help Desk at 978-665-4500)**

Click **Connect**

Click **Close**

If you are unable to connect, **contact the FSC Help Desk at 978-665-4500** for assistance.